

## ***NS14 Australian Championships 23024/2025***

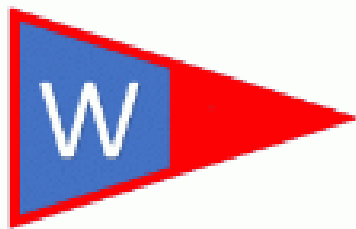
**12<sup>th</sup> & 16<sup>th</sup> of January 2025**

# **Sailing Instructions**

The Organising Authority is:

## **Wangi Amateur Sailing Club (WASC)**

**275 Watkins Rd, Wangi Wangi, NSW 2267**



### **Under the Authority of Australian Sailing (AS)**

Conjunction with the NSW NS14 Association

#### **VERSION 3**

## **1. RULES**

- 1.1 The Regatta will be governed by the rules as defined in the current Racing Rules of Sailing (RRS) including the Australian Sailing (AS) Prescriptions, Special Regulations of AS Part 2 for off the beach boats.
- 1.2 The NS14 Association of Australia Class Rules as modified in the Notice of Race (NOR).
- 1.3 When conflict occurs between the Notice of Race and the Sailing Instructions, the rules of the Sailing Instructions shall prevail. This changes RRS 63.7.
- 1.4 RRS Appendix T – Arbitration applies.

## **2. NOTICES TO COMPETITORS**

- 2.1 Notices to competitors will be posted on the official notice board located downstairs outside the Wangi Amateur Sailing Club (WASC).

### 3. CHANGES TO SAILING INSTRUCTIONS

3.1 Any change to the Sailing Instructions will be posted before 0900 hours on the day it will take effect, except that any change to the schedule of races will be posted by 1800 hours on the day before it will take effect.

### 4. SIGNALS MADE ASHORE

4.1 Signals made ashore will be displayed on the flagstaff located on the foreshore in front of WASC.

4.2 When flag AP is displayed ashore '1 minute' is replaced with 'not less than 30 minutes' in the race signal AP.

### 5. SCHEDULE OF RACES

5.1 The schedule of races is as per the following table:

DATE	EVENT	TIME
Sun 12 <sup>th</sup> January 2025	Registration Measurement and Safety Checks	10hrs – 16hrs
Mon 13 <sup>th</sup> January 2025	Compulsory Skippers Briefing	1200hrs
	Race Day 1 Warning Signal not before	1400hrs
Tue 14 <sup>th</sup> January 2025	Race Day 2 Warning Signal not before	1400hrs
Wed 15 <sup>th</sup> January 2025	Race Day 3 Warning Signal not before	1400hrs
Thu 16 <sup>th</sup> January 2025	Race Day 4 Warning Signal not before Trophy Presentation	1300hrs ASAP after racing

5.2 A total of eight (8) races are scheduled with a maximum of three (3) races in any one day.

5.3 No warning signal shall be made after 1500hrs on Thursday 16<sup>th</sup> January 2025.

### 6. CLASS FLAGS

6.1 The Class flag will be a white flag with the black NS14 insignia.

### 7. RACING AREA'S

7.1 Addendum A shows the approximate location of the racing areas.

## **8. THE COURSES**

- 8.1 The diagrams in Addendum B shows the approximate position of the rounding marks, the order in which marks are to be passed and the side on which each mark is to be passed.
- 8.2 The course number to be sailed will be indicated by the relevant numeral pennant being displayed on the Race Committee signal vessel.

## **9. MARKS**

- 9.1 The Start Mark will be an orange stick mark with an orange flag.
- 9.2 Mark's 1, 2 and 3 will be large yellow inflatable buoys.
- 9.3 The Finish Mark will be a blue stick mark with a blue flag.
- 9.4 Inner Distance Mark (Barging Buoy) if used, will be a red teardrop mark
- 9.5 Substitute Mark for change of course will be a large blue inflatable buoy.

## **10. AREAS THAT ARE OBSTRUCTIONS**

- 10.1 The shoreline and moored boats shall be designated as obstructions. Competitors are not allowed to sail within 30 metres of moored boats.

## **11. THE START**

- 11.1 Races will be started by using RRS26 with the warning signal made five (5) minutes before the starting signal.
- 11.2 The starting line will be between a staff displaying an orange flag on the Race Committee signal vessel and the port- end start mark.
- 11.3 If an Inner distance mark (barging buoy) is used, boats shall not pass between it and the Race Committee Signal vessel.
- 11.4 A boat starting later than four (4) minutes after her starting signal will be scored Did Not Start without a hearing. This changes RRS 35, A4 and A5.

## **12. CHANGE OF THE NEXT LEG OF THE COURSE**

- 12.1 The Race Committee may change a leg of the course that begins at a rounding *mark* by changing the position of the next *mark* (or the finishing line) and signaling all boats before they begin the leg. The next *mark* need not be in position at that time.

## **13. THE FINISH**

- 13.1 The finishing line will be between a staff displaying a blue flag on the Race Committee signal vessel and the finish mark.

## **14. PENALTIES**

- 14.1 A boat that has taken a penalty or retired under RRS 44.1 shall complete an acknowledgement form at the Sailing Office within the protest time limit.
- 14.2 The Protest Committee may award a Disqualification or a Scoring Penalty which may include no penalty. This changes RRS 64.2.

## **15. TIME LIMITS & TARGET TIMES**

- 15.1 The target time for the first boat to complete the course is 50 minutes.
- 15.2 Failure to meet the target time will not be grounds for redress. This changes RRS 62.1(a).
- 15.3 Time limit for the first boat to complete the course is 75 minutes.
- 15.4 Boats failing to finish within 20 minutes after the first boat sails the course and finishes may be scored their position on the course and is not subject to protest. This changes RRS 28, 35, 62.1 (a), A4 & A5.

## **16. PROTESTS AND REQUESTS FOR REDRESS**

- 16.1 Protest forms are available at the race office located at the Sailing Office. Protests and requests for redress or reopening shall be delivered there within the appropriate time limit.
- 16.2 The protest time limit is 60 minutes after the last boat has finished the last race of the day.
- 16.3 Notices will be posted no later than 30 minutes after the protest time limit to inform competitors of hearings in which they are parties or named as witnesses and the time and venue for the hearing
- 16.4 Notices or protests by the Race Committee will be posted to inform boats under rule 61.1(b).
- 16.6 Breaches of Sailing Instruction's 18, 19, 20, 22, 23 and 24 will not be grounds for protest by a boat. This changes rule 60.1(a). Penalties for these breaches will be discretionary penalties (DPI) imposed by the protest committee.
- 16.7 On the last scheduled day of racing a request for reopening a hearing, or a request for redress based on a Protest Committee decision shall be delivered:
  - 16.7.a within the protest time limit, if the requesting party was informed of the decision on the previous day:
  - 16.7.b no later than 20 minutes after the requesting party was informed of the decision on that day. This changes RRS rule 66.

## **17. SCORING**

- 17.1 The Low Point Scoring System of Appendix A will apply.
- 17.2 Three (3) races are required to be completed to constitute a series.
- 17.3 If 4 or less races are completed, each boats series score will be the total of all her race scores without a discard.

- 17.4 When five (5) or more races have been completed, a boat's series score will be the total of her race scores after discarding the worst single race score.
- 17.5 A handicap scoring system will also be maintained for the event

### 18. SAFETY REGULATIONS

- 18.1 Sign on and Sign off requirements are:
  - 18.1a All helmspersons shall sign on, on the sheets provided, prior to the start of the first race of the day. Failure to do so will result in the competitor having a scoring penalty (SCP) of 5 points added to their score in the first race of the day. This changes RRS Appendix A.
  - 18.1b All helmspersons shall sign off on the sheets provided within sixty (60) minutes after the last boat has finished the last race of the day. Failure to do so will result in the competitor having a scoring penalty (SCP) of 5 points added to their score in the last race of the day. This changes RRS Appendix A.
- 18.2 The skipper of a boat that retires or does not intend to continue racing is required to notify an official Support Boat and await further instruction prior to returning to Clubhouse.
- 18.3 All Competitors are encouraged to carry a Harness Rescue Tool or similar device that is readily accessible in an emergency.

### 19. REPLACEMENT OF CREW OR EQUIPMENT

- 19.1 Substitution of skippers and crews will not be allowed.
- 19.2 Substitution of damaged or lost equipment will not be allowed unless authorized by the Race Committee. Requests for substitution shall be made at the first reasonable opportunity.

### 20. EQUIPMENT AND MEASUREMENT CHECKS

- 20.1 A National Measurer may spot check boats at any time during the Regatta. A boat notified of inspection shall follow the instructions of the National Measurer. The penalty for boats failing to measure in accordance with the rules will be to be scored DSQ in all races prior to the decision. This changes RRS 64.1.

### 21. OFFICIAL BOATS

- 21.1 Official boats will be marked with the WASC burgee.

### 22. SUPPORT BOATS

- 22.1 Team Leaders, Coaches, and other support personnel shall not be within 50 metres of competitors or the course, including the Start and Finish Lines, from the time of the preparatory signal until each boat has finished or the race committee signals a postponement, general recall or abandonment. Penalty for failing to comply with this requirement will be discretionary and may be disqualification (after protest by the Race Committee Only) of all boats associated with the infringing support personnel.
- 22.2 It is recommended that all support boats carry a VHF radio tuned to the race management channel

## **23. RUBBISH DISPOSAL**

23.1 Boats shall not put rubbish in the water.

## **24. RADIO COMMUNICATION**

24.1 Except in an emergency, a boat shall neither make radio transmissions while racing nor receive radio communications not available to all boats. This restriction also applies to mobile telephones.

## **25. PRIZES**

25.1 Will be as per the Notice of Race

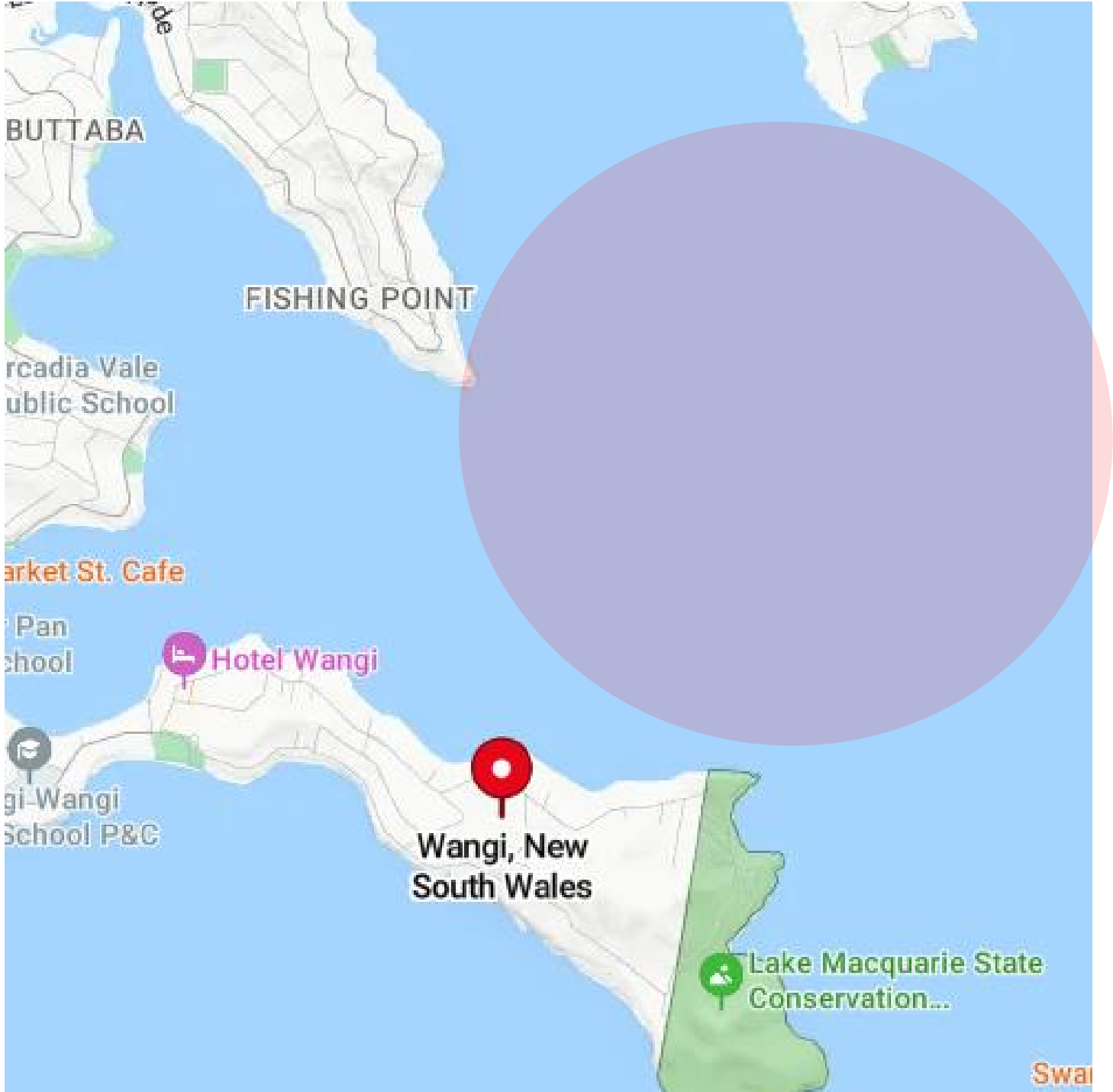
## **26. RISK STATEMENT**

26.1 Competitors participate in the Regatta entirely at their own risk - RRS 3 states: 'The responsibility for a boat's decision to participate in a race or to continue to race is hers alone.'

26.2 By participating in this event each competitor agrees and acknowledges that sailing is a potentially dangerous activity with inherent risks. These risks include strong winds and rough seas, sudden changes in weather, failure of equipment, boat handling errors, poor seamanship by other boats, loss of balance on an unstable platform and fatigue resulting in increased risk of injury. Inherent in the sport of sailing is the risk of permanent, catastrophic injury or death by drowning, trauma, hypothermia or other causes. The Organising Authority and Australian Sailing will not accept any liability for material damage or personal injury or death sustained in conjunction with or prior to, during, or after the event.

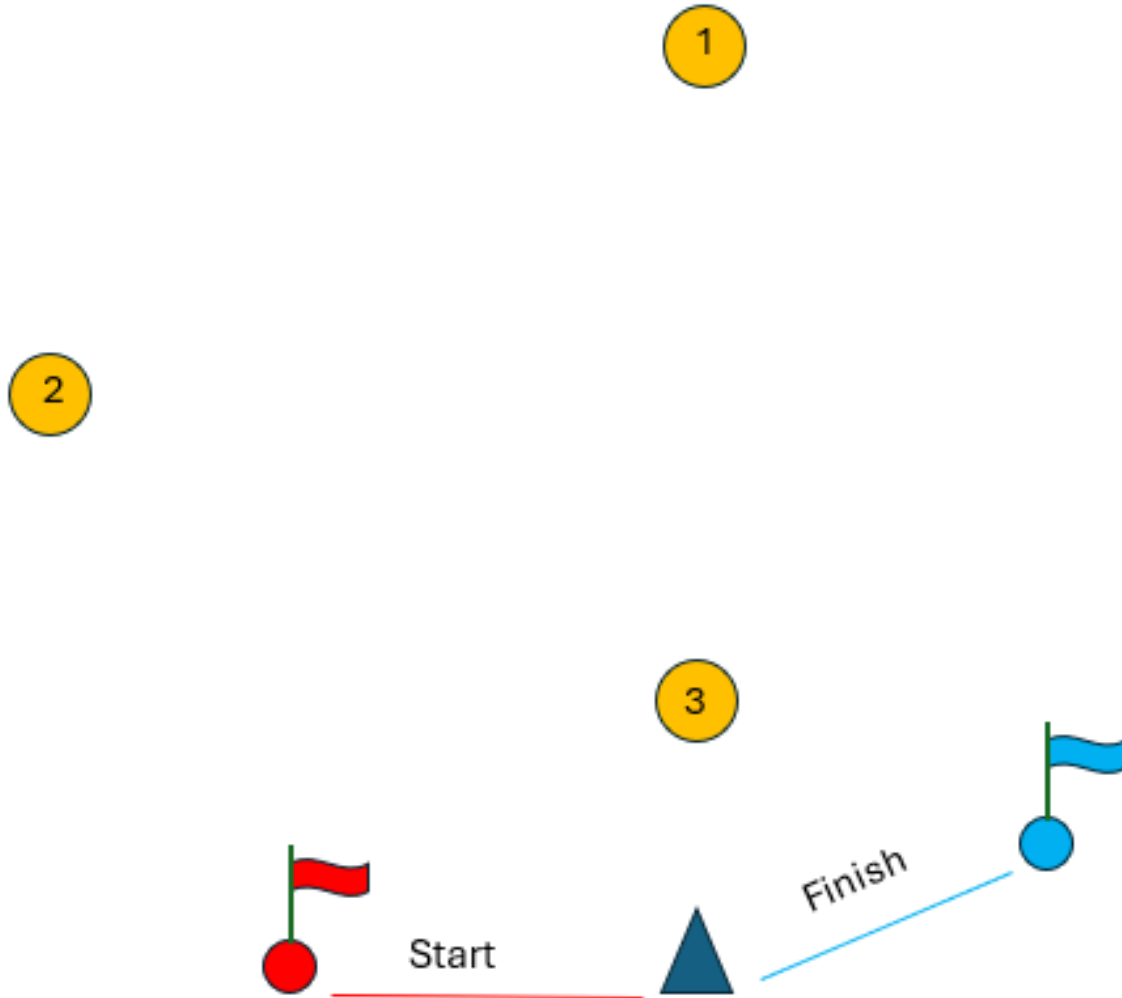
27. ADDENDUM A – RACING AREA/S




Race area indicated by the shaded area



Race area indicated by the shaded area

28. ADDENDUM B – THE COURSES



NUMERAL PENANT	MARK ROUNDINGS
1 	START - 1 - 2 - 3 - FINISH
2 	START - 1 - 2 - 3 - 1 - 3 - FINISH
3 	START - 1 - 2 - 3 - 1 - 3 - 1 - 2 - 3 - FINISH
All rounding marks are to be to <b>PORT</b>	